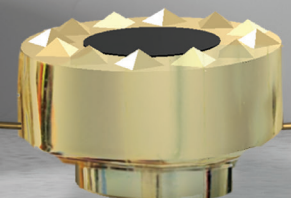
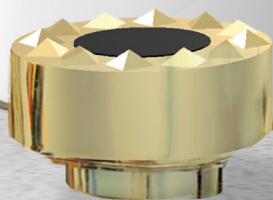


MARTIN LION

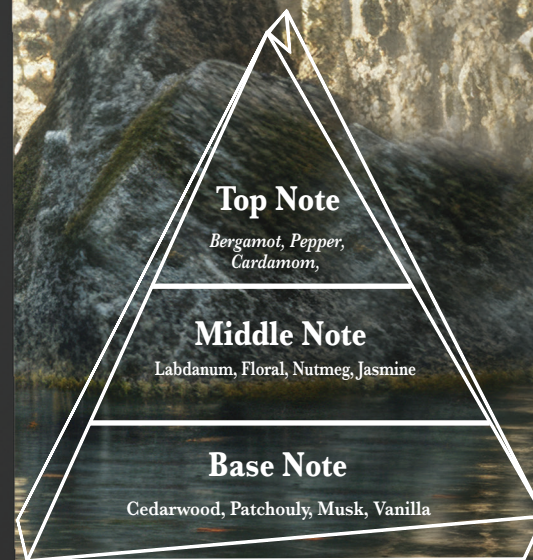
L'ATELIER NICHE



MARTIN LION

L'ATELIER NICHE

CROCODILLO

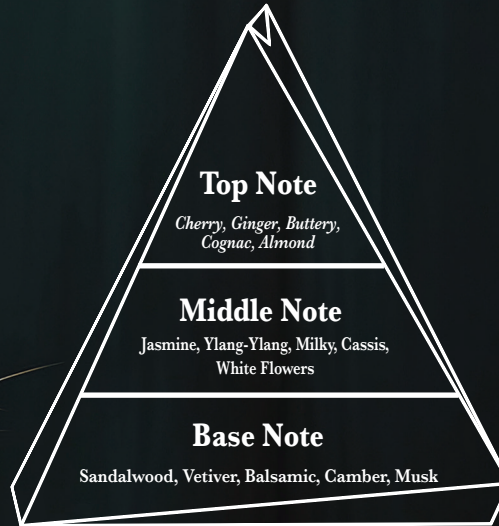


ORIENTAL - WOODY

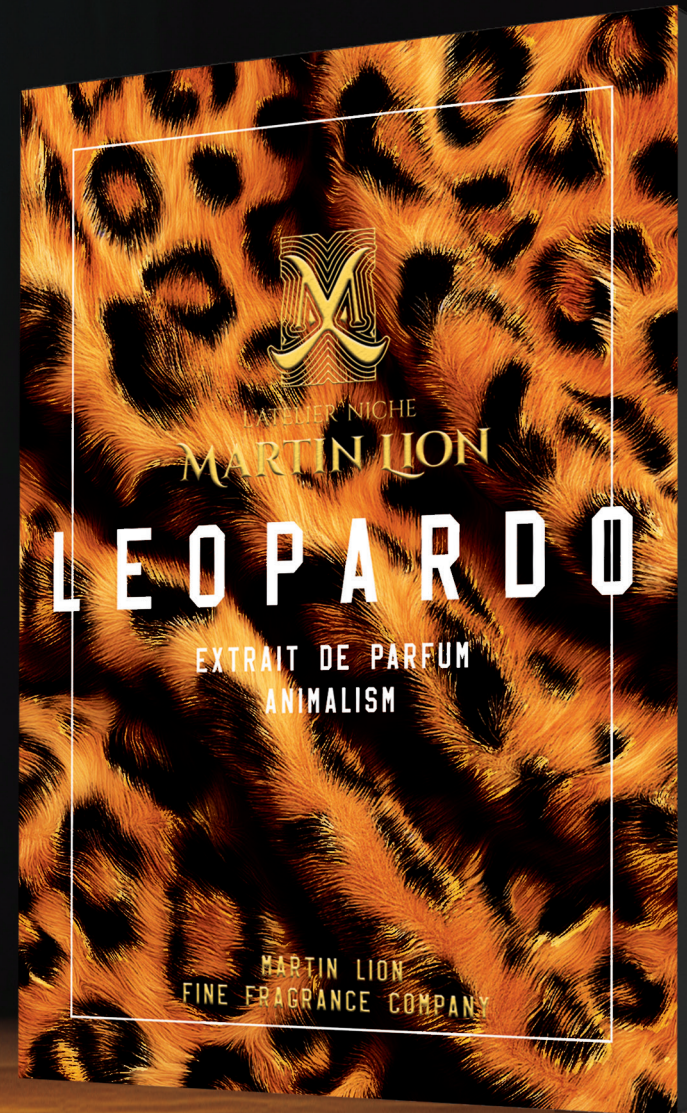
MARTIN LION

L'ATELIER NICHE

LEOPARDO



FRUITY - FLORAL



MARTIN LION

L'ATELIER NICHE

BITTER X FLY

Top Note

Orange, Cognac,
Hazelnut

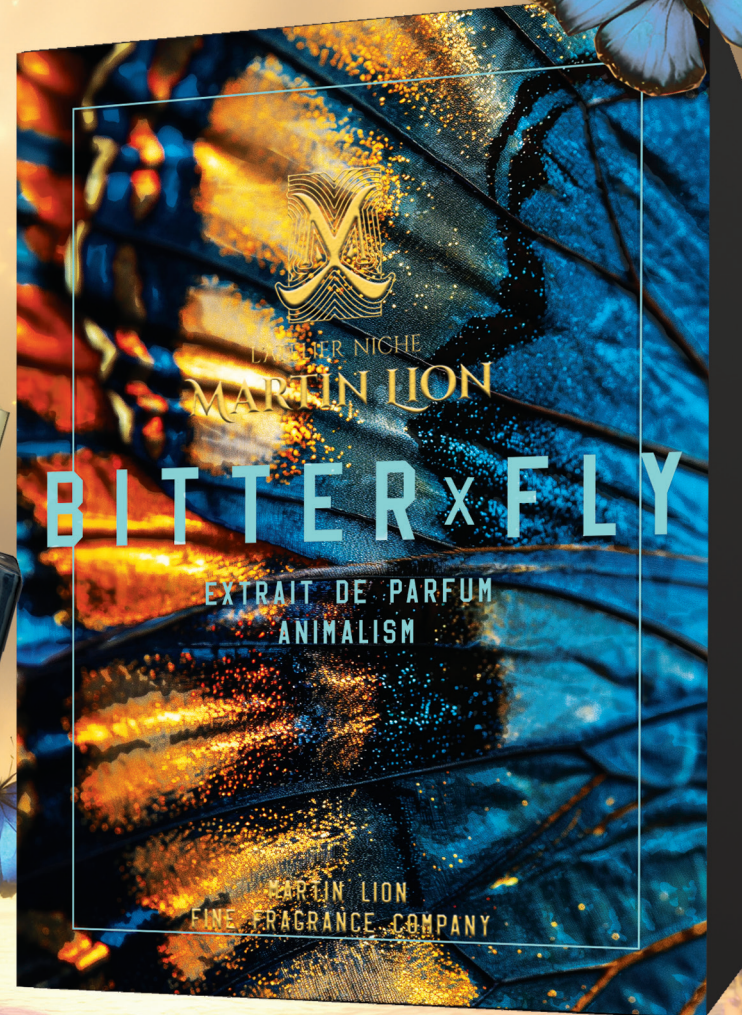
Middle Note

Cinnamon, Tonka Beans, Labdanum,
Myrrh, Chocolate, Caramel

Base Note

Woody Notes, Amber, Vanilla

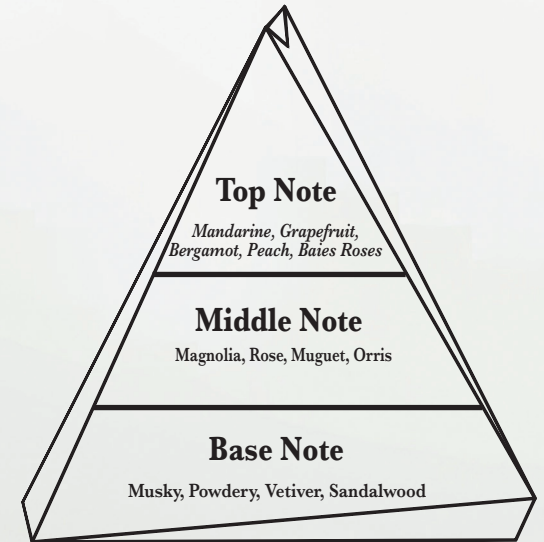
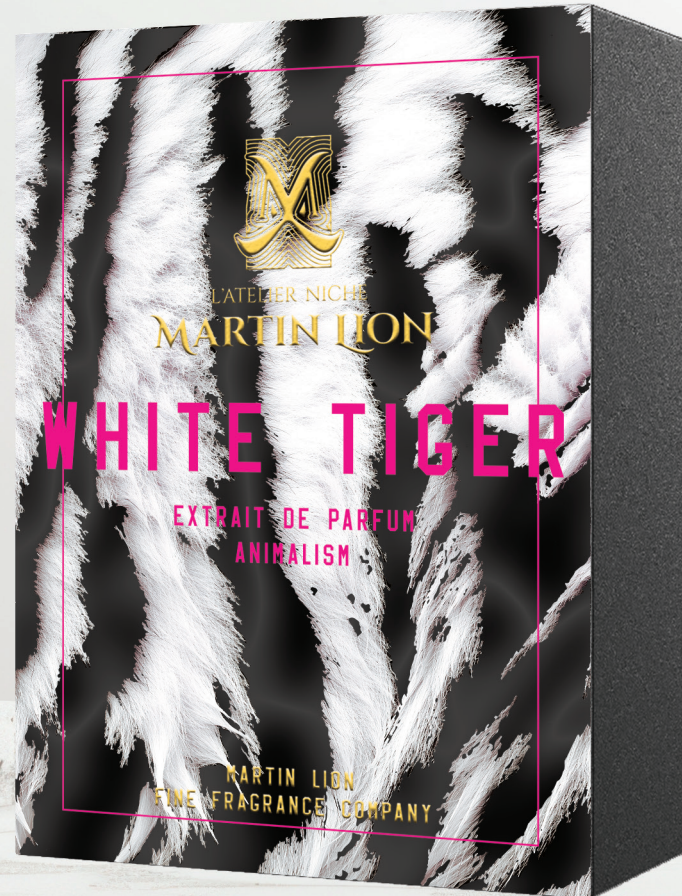
ORIENTAL - GOURMAND



MARTIN LION

L'ATELIER NICHE

WHITE TIGER



CITRUS - MUSKY

MARTIN LION

L'ATELIER NICHE

CHI X CHI

Top Note

*Orange Blossom,
Mandarine, Orange*

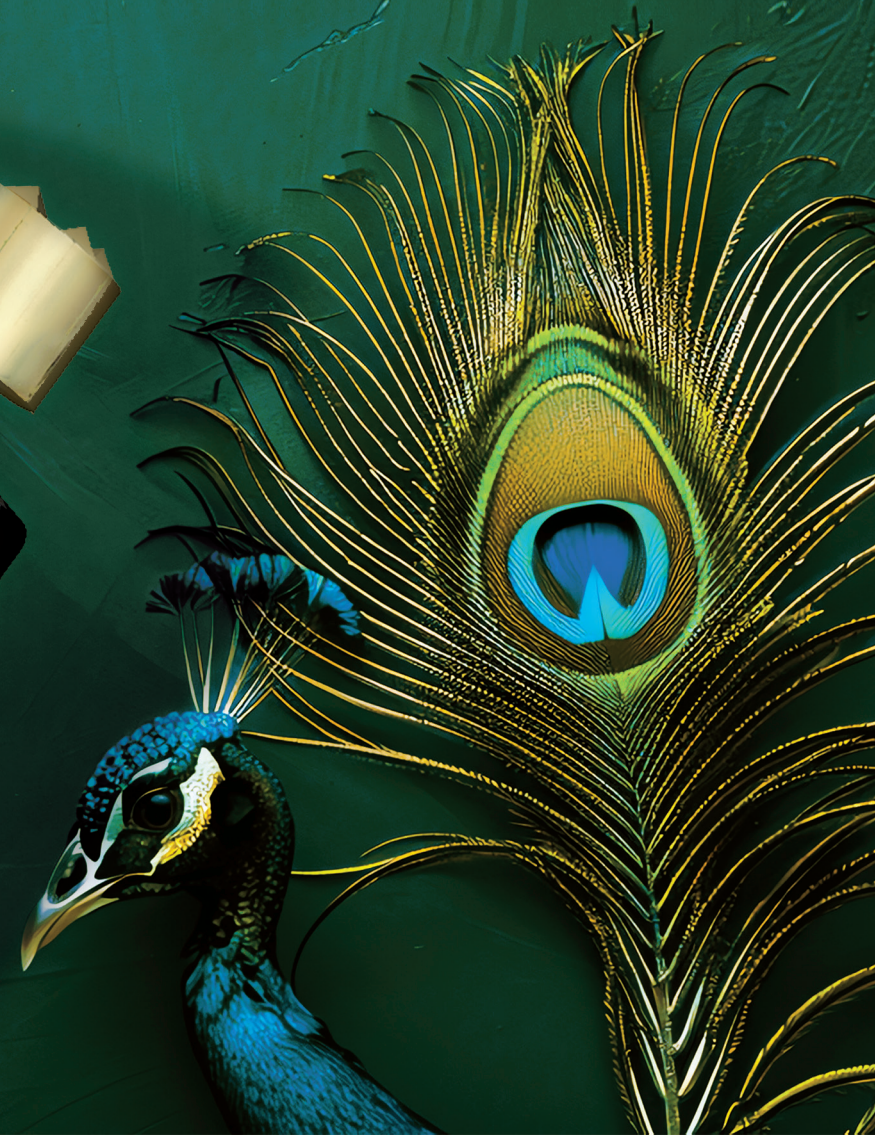
Middle Note

Tuberose, Ylang

Base Note

Sandalwood, Cedar, Musk, Vanilla

FLORAL - WOODY



MARTIN LION

L'ATELIER NICHE

VENOM FURR

Top Note

Bergamot, Rose

Middle Note

Cashmere Wood, Saffron

Base Note

Tonka Bean, Amber, Vanilla, Musk, Mossy Notes

ORIENTAL

